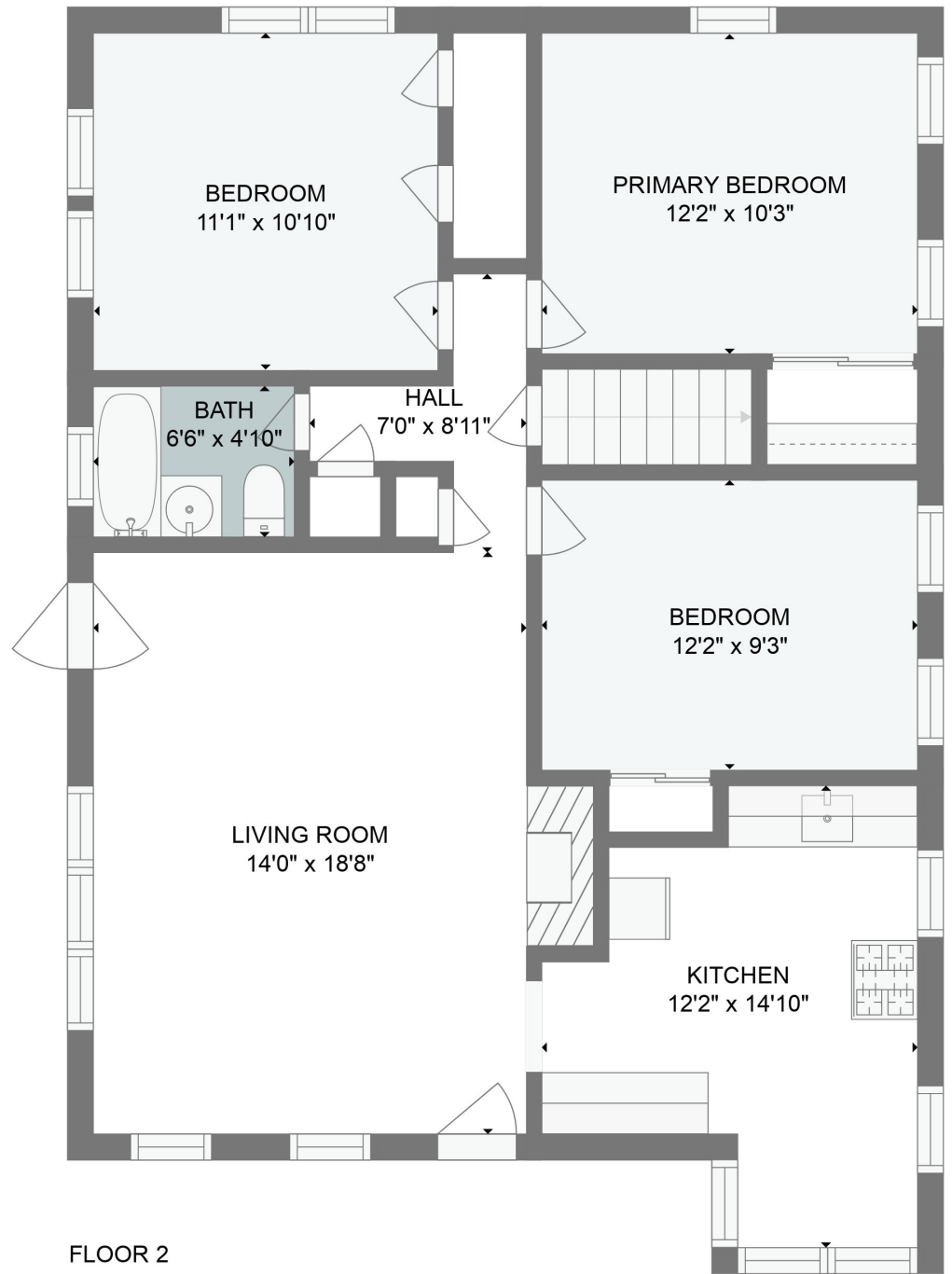


BASEMENT
24'2" x 33'5"

FLOOR 1



BEDROOM
11'1" x 10'10"

PRIMARY BEDROOM
12'2" x 10'3"

BATH
6'6" x 4'10"

HALL
7'0" x 8'11"

BEDROOM
12'2" x 9'3"

LIVING ROOM
14'0" x 18'8"

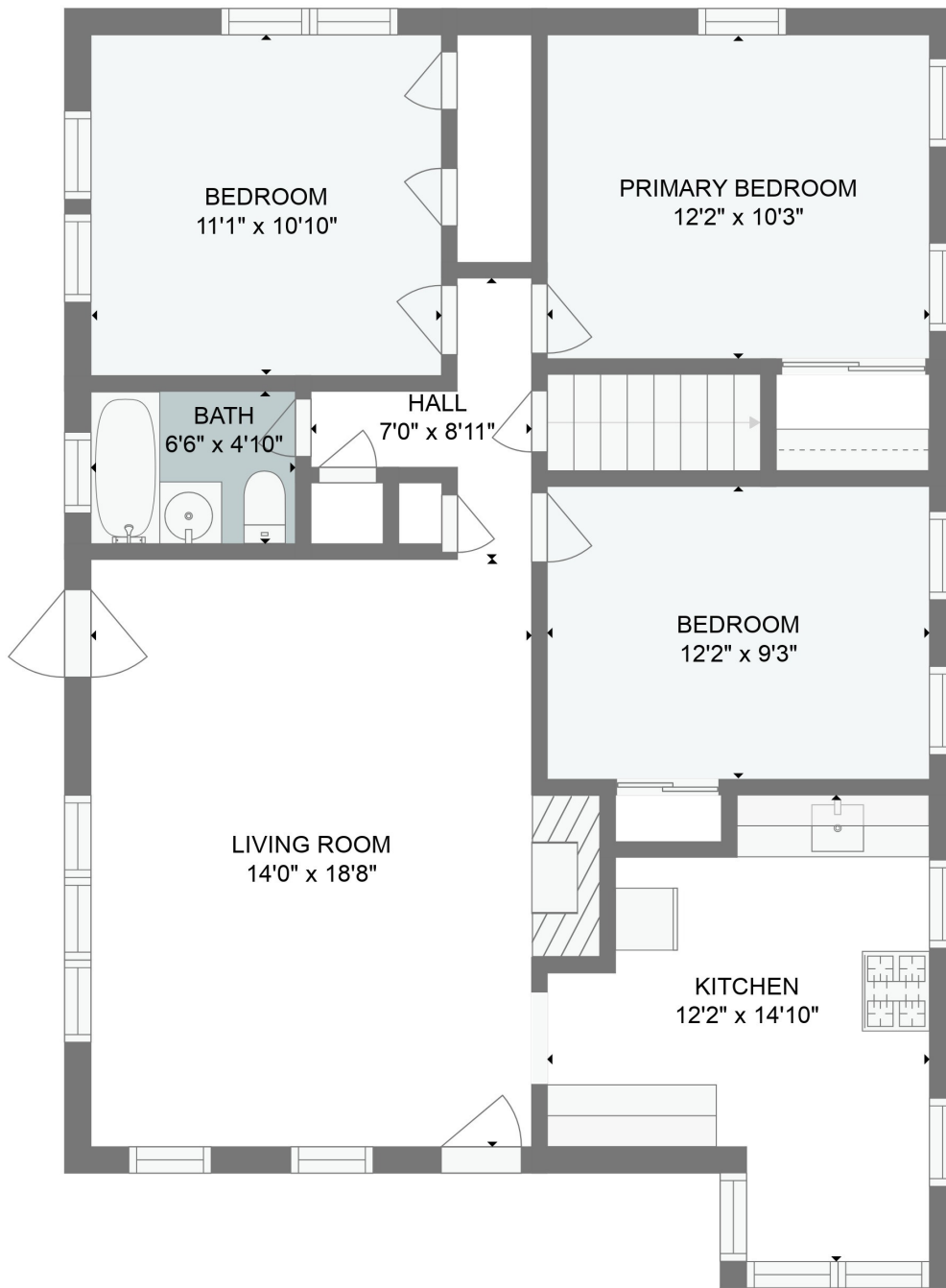
KITCHEN
12'2" x 14'10"

FLOOR 2

GROSS INTERNAL AREA
FLOOR 1: 811 sq. ft, FLOOR 2: 962 sq. ft
TOTAL: 1773 sq. ft

Size and dimensions are approximate. Actuals may vary.





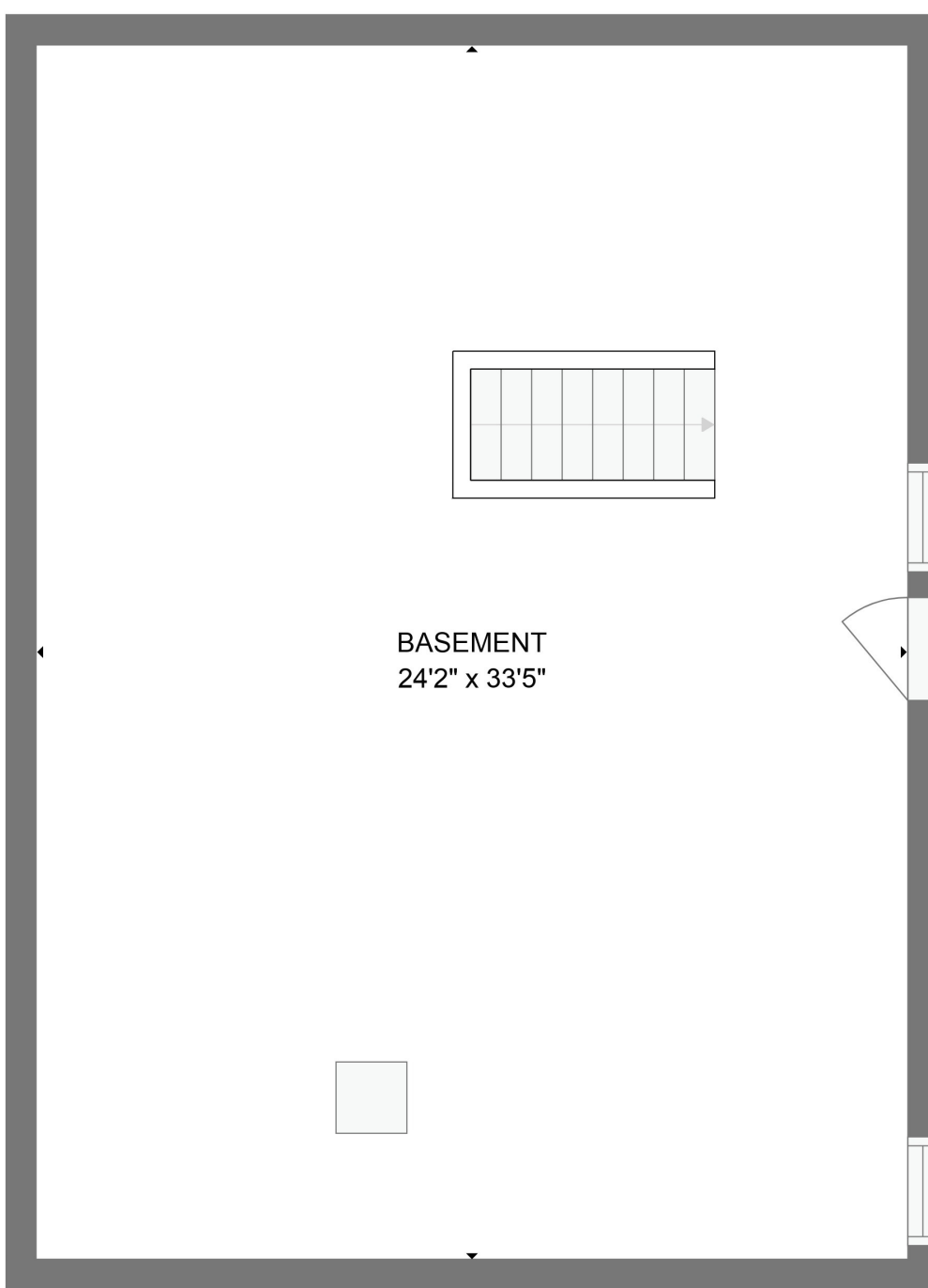
GROSS INTERNAL AREA

FLOOR 1: 811 sq. ft, FLOOR 2: 962 sq. ft

TOTAL: 1773 sq. ft

Size and dimensions are approximate. Actuals may vary.





BASEMENT
24'2" x 33'5"



GROSS INTERNAL AREA

FLOOR 1: 811 sq. ft, FLOOR 2: 962 sq. ft

TOTAL: 1773 sq. ft

Size and dimensions are approximate. Actuals may vary.

