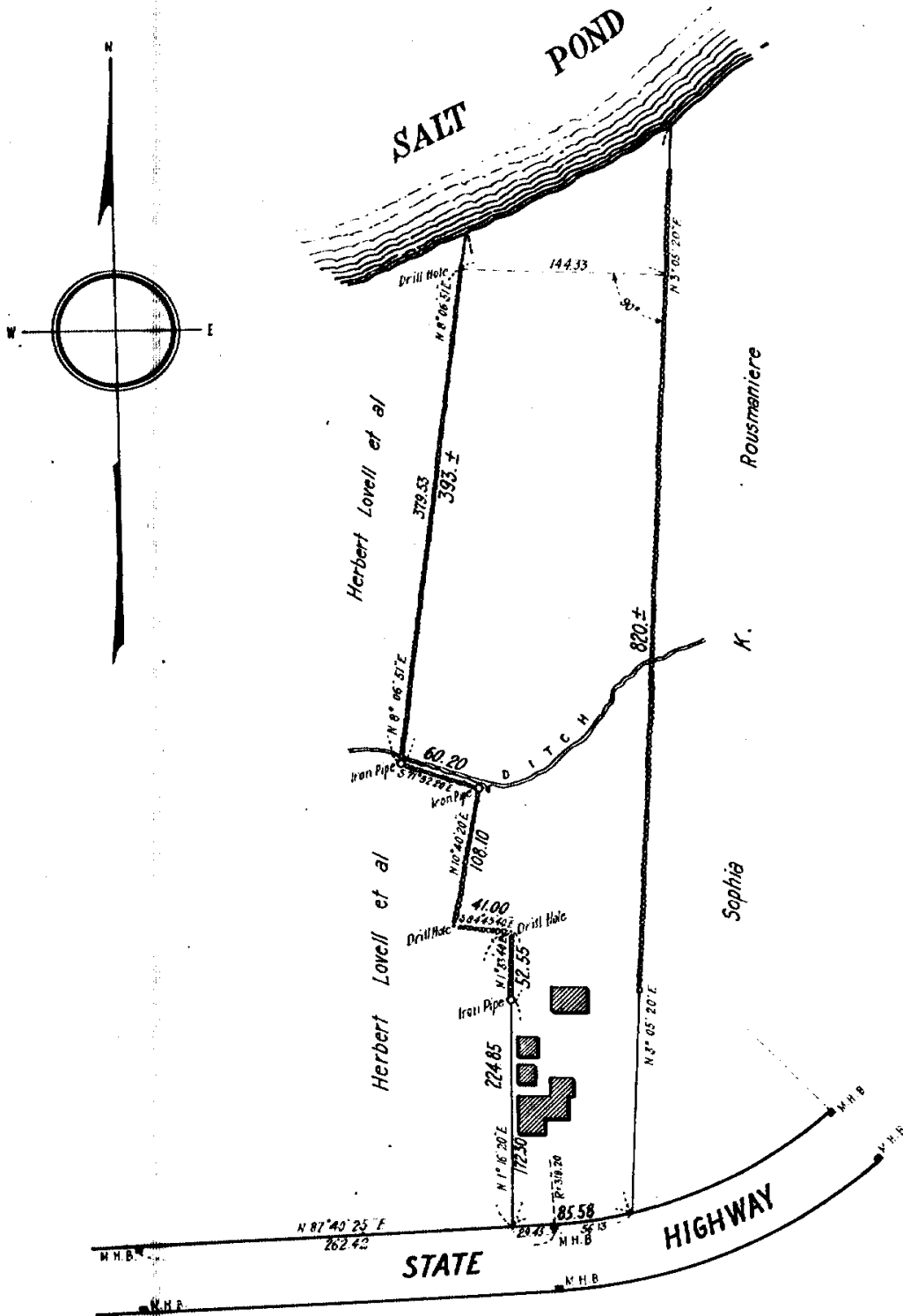


PLAN OF LAND IN YARMOUTH

Scale 50 feet to an inch

AUG. 20, 1928

I. H. Smith, Surveyor



Copy of part of plan
 filed in
LAND REGISTRATION OFFICE
 SEPT. 17, 1928
 Scale of this plan 100 feet to an inch
 C.B. Humphrey, Engineer for Court.